

JDAW



Times Eye Nose Mouth Score

A

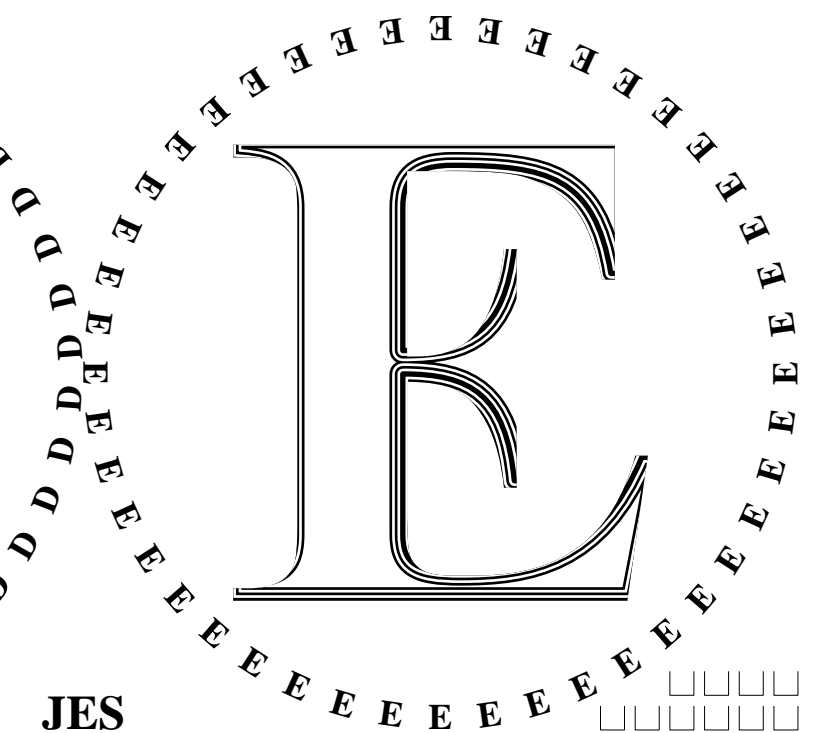
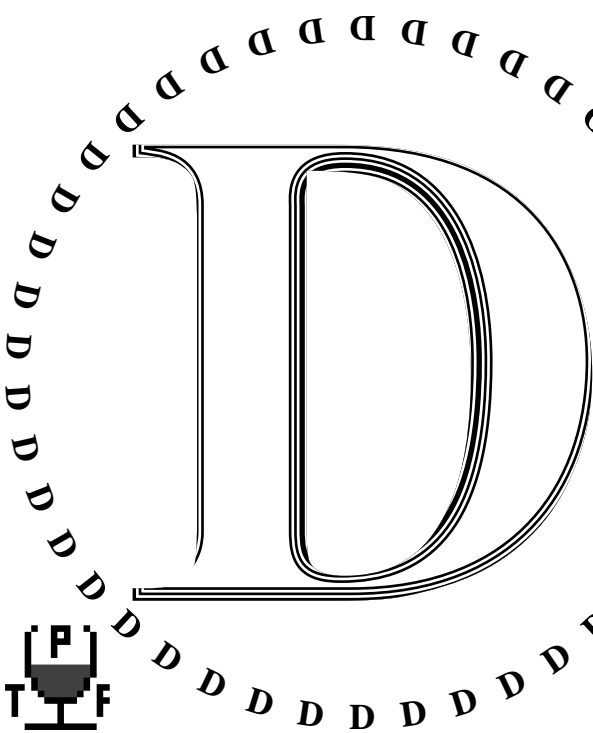
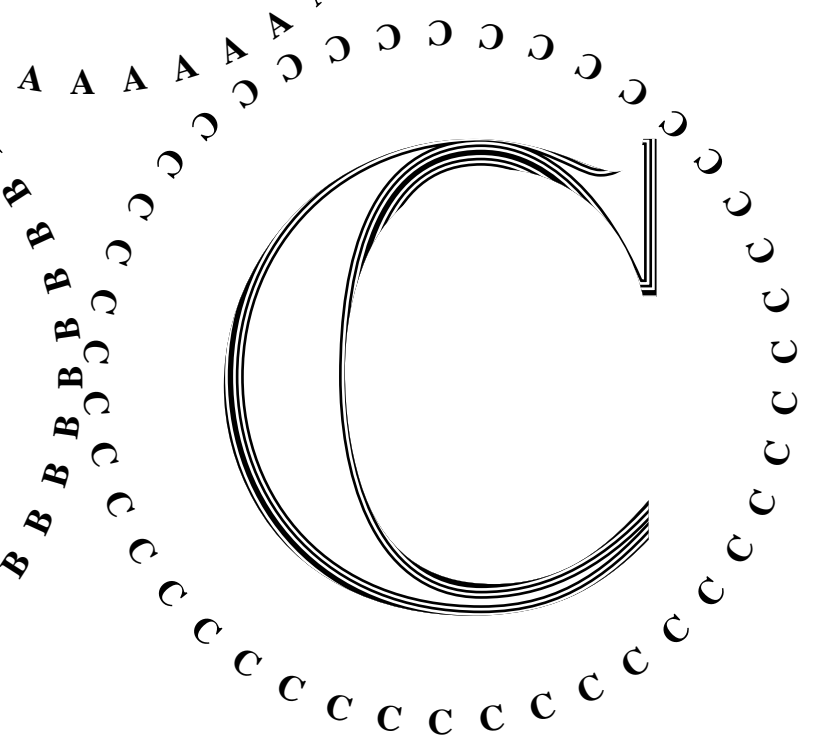
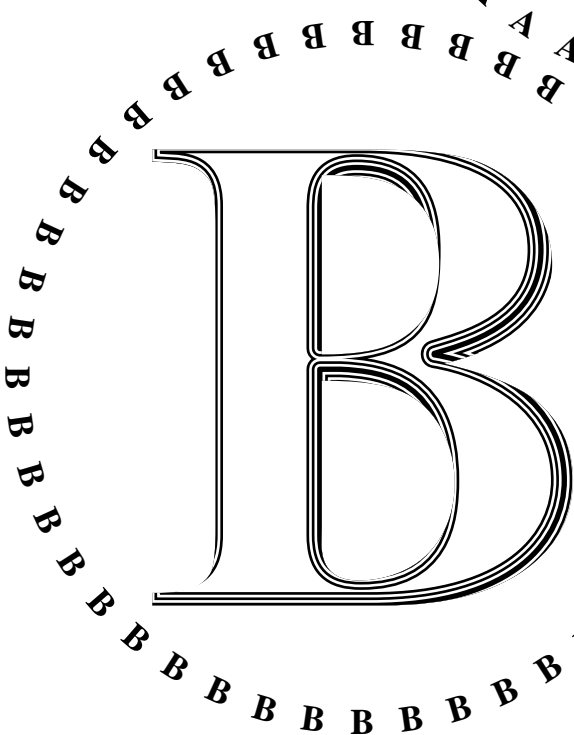
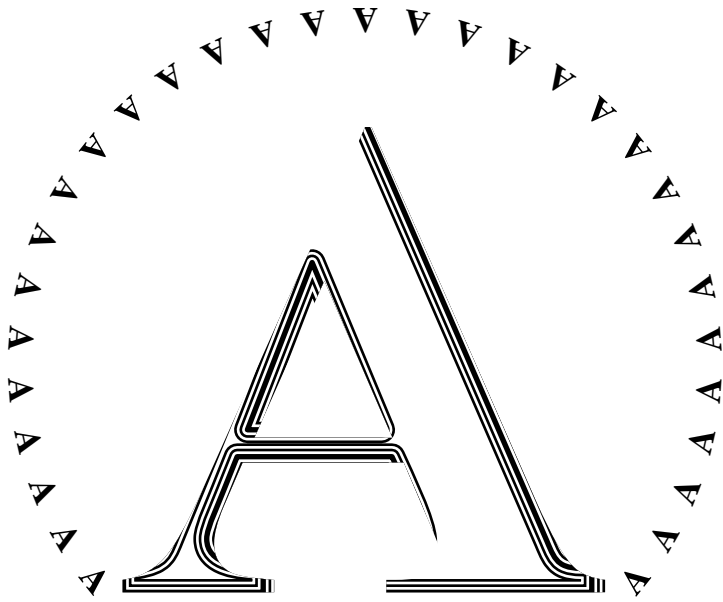
B

C

D

E

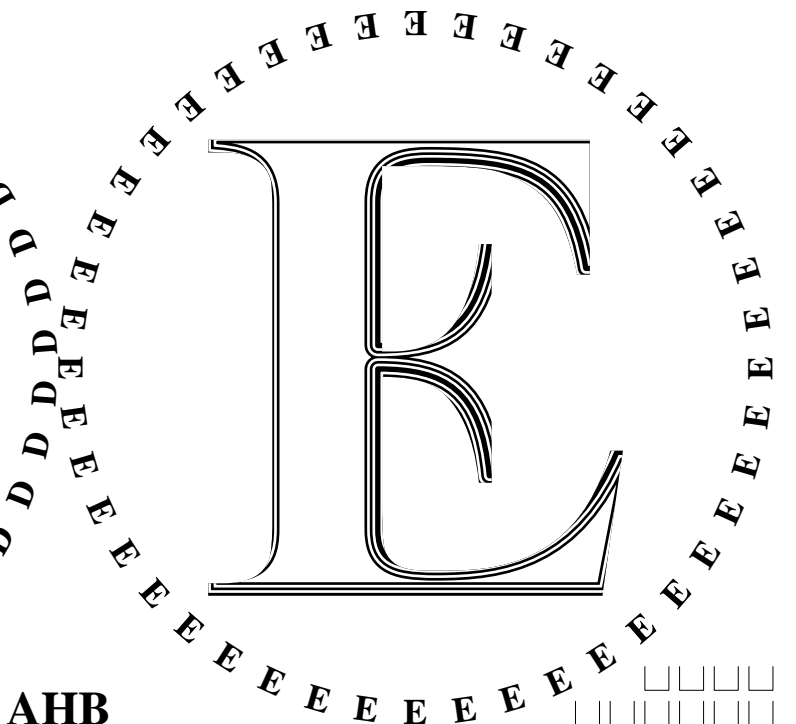
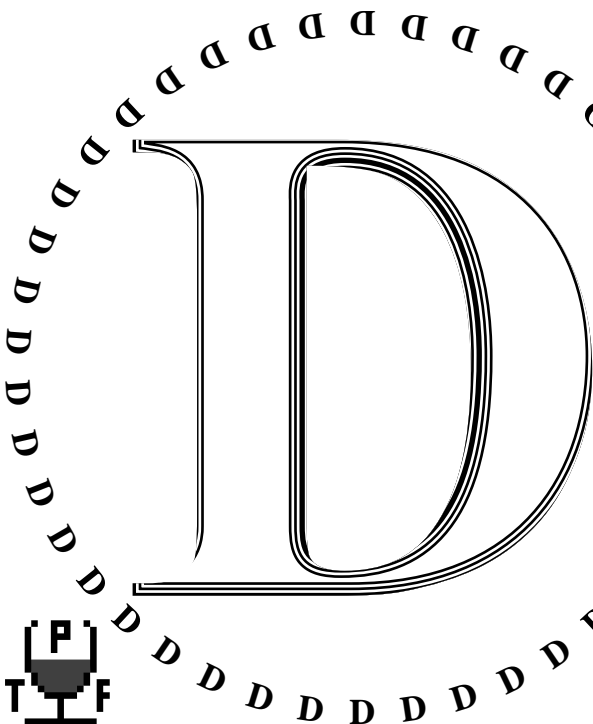
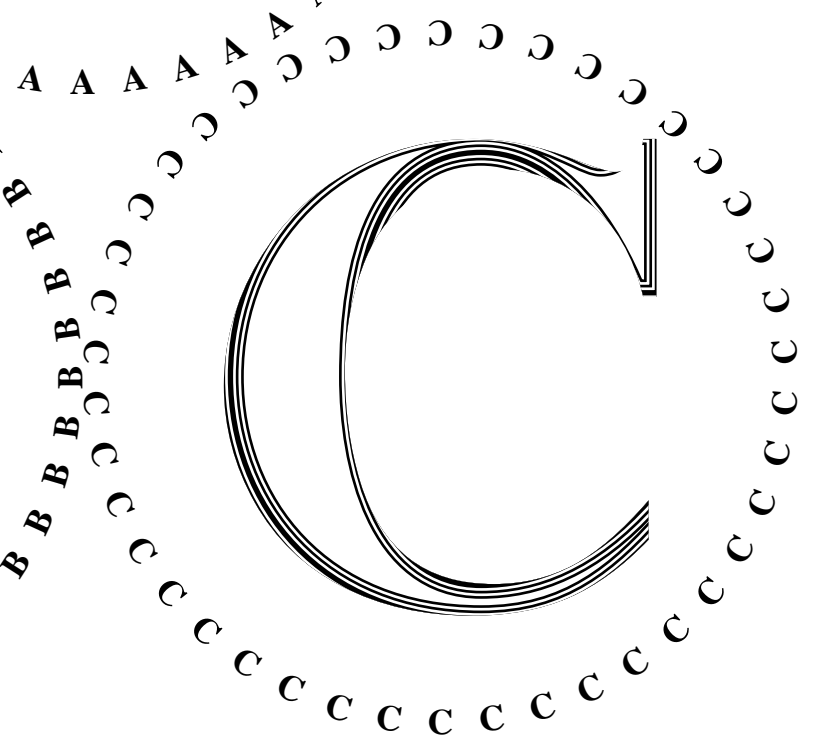
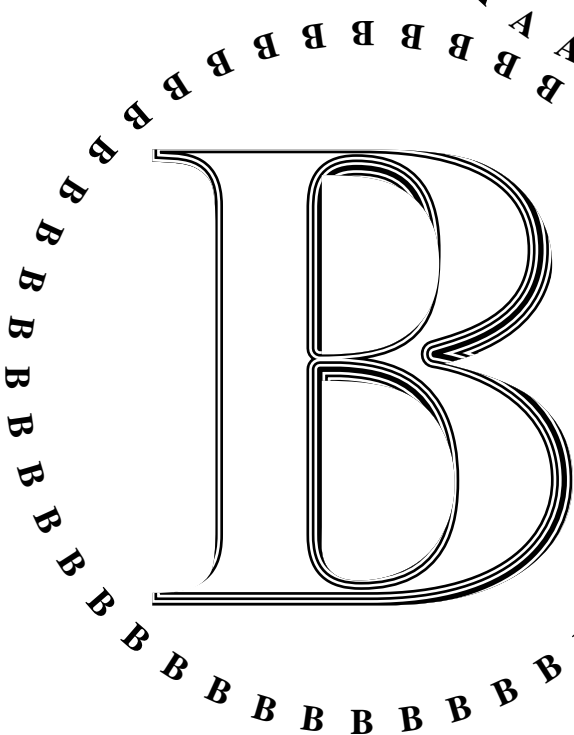




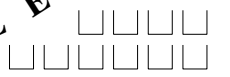
JES







AHB



Times Eye Nose Mouth Score

A

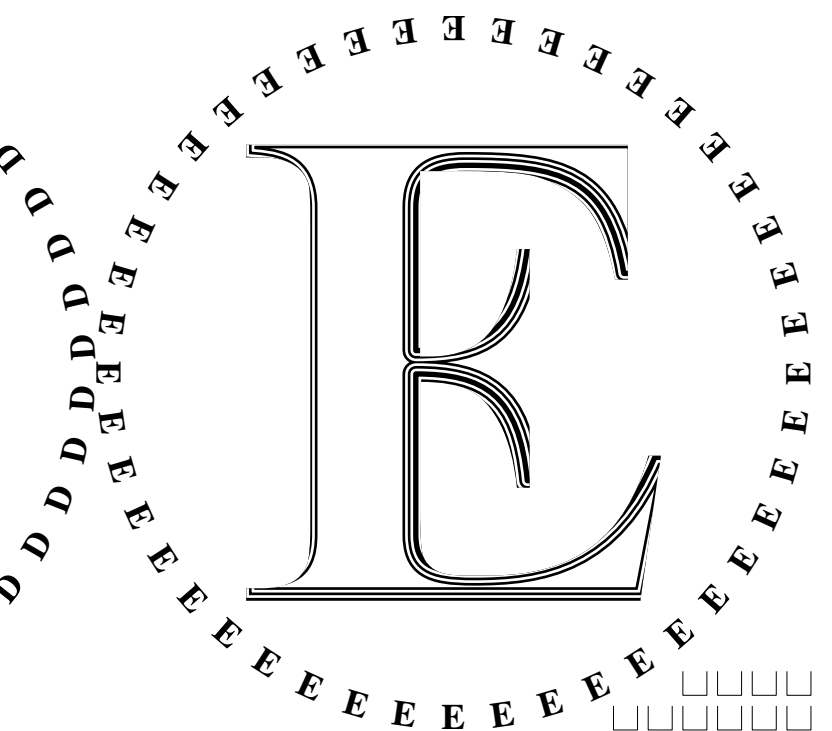
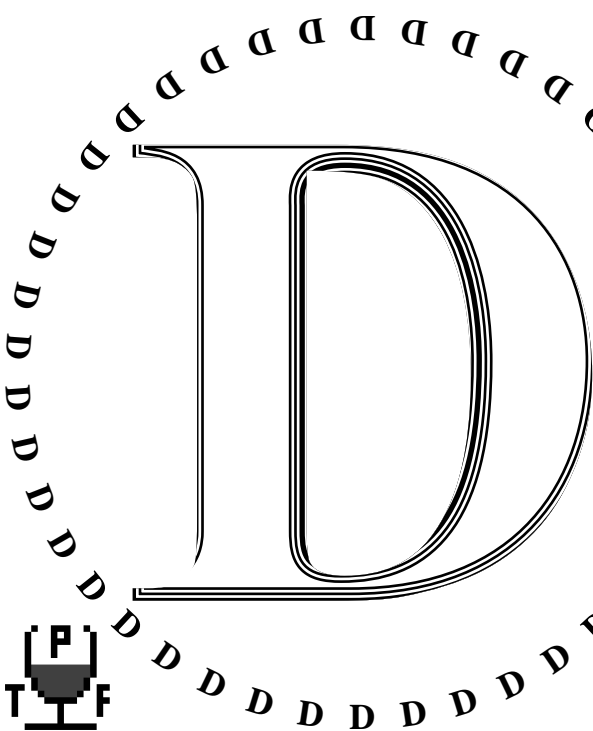
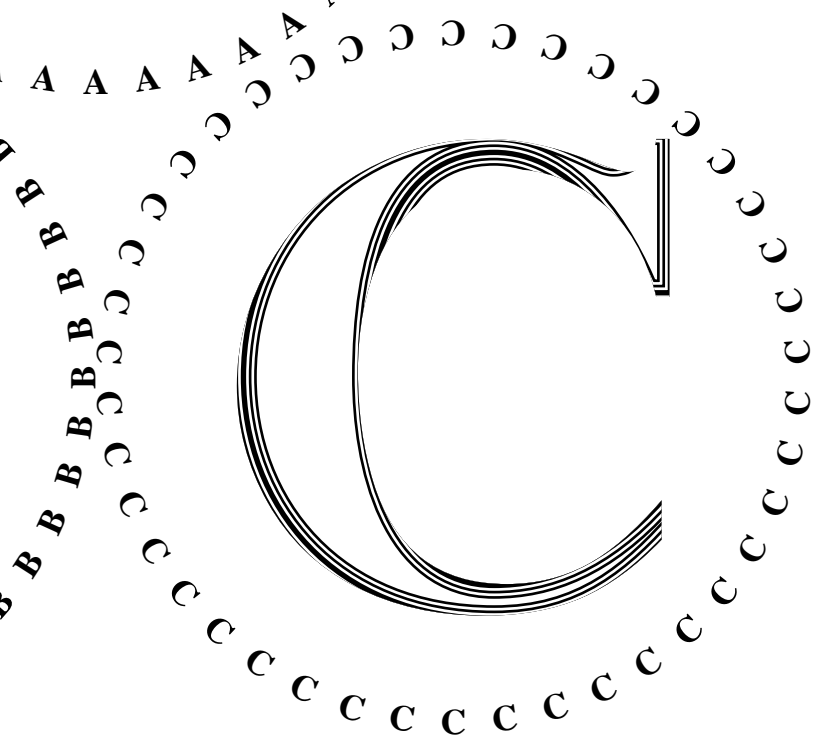
B

C

D

E





Times Eye Nose Mouth Score

A

B

C

D

E





# Wine Of The Night

Revised print out only

## JDAW

## JES

## AHB

## Total

### A

### B

### C

### D

### E

	JDAW	JES	AHB	Total
A				
B				
C				
D				
E				

**Q:**

Revealed points not risk.

**JDAW**

**JES**

**AHB**

**Total**

**A**

**B**

**C**

**D**

**E**

	JDAW	JES	AHB	Total
A				
B				
C				
D				
E				

# Decanting Notes

Decant Time	Cork condition, branding, &c
<b>A</b>	
<b>B</b>	
<b>C</b>	
<b>D</b>	
<b>E</b>	

```
www.jdawiseman.com/papers/placemat/placemat.html www.jdawiseman.com/papers/placemat/placemat.html www.jdawiseman.com/papers/placemat/placemat.ps
product = Distiller; languagelevel = 3; version = 3018.101; revision = 0; serialnumber = 0; usertime = 145326
PageCount = 25; PrinterName = (); BuildTime = 1213249358; CurFontCache = 5172; MaxFontCache = 100000000; CurFormCache = 0;
MaxFormCache = 100000; CurOutlineCache = 0; MaxOutlineCache = 100000; CurUPathCache = 0; MaxUPathCache = 0; RealFormat = (IEEE);
FactoryDefaults = false; FontResourceDir = (%hostfont%fonts/); GenericResourceDir = (%genericresource%); currentcolorspace = [
/DeviceGray ]; currentglobal = false;
Version of placemat program code = D:201111060700 = 2011 Nov 06 at 0700
Fonts: TitlesFont = TimesNewRomanPS-BoldMT; CircletextFont = TimesNewRomanPS-BoldMT; NamesFont = TimesNewRomanPS-BoldMT; HeaderFont
= TimesNewRomanPS-BoldMT
ExternalLinks = http://www.theportforum.com/viewtopic.php?t=0175&view=unread#unread
http://www.jdawiseman.com/papers/placemat/placemat.pdf
FooterCenterText-Backstage, ASCIIified = http://www.theportforum.com/viewtopic.php?t=0175&view=unread#unread
http://www.jdawiseman.com/papers/placemat/placemat.pdf
Names = [ [ (JDA) { -0.08 Kern } (W) ] (JES) (AHB) ( ) ]
Equivalences: Titles = Circlearrays = TitlesTastingNotes = CirclearraysTastingNotes = TitlesVoteRecorder = CirclearraysVoteRecorder
= TitlesDecantingNotes = CirclearraysDecantingNotes; Belowtitles = SubtitlesTastingNotes = SubtitlesVoteRecorder =
SubtitlesDecantingNotes;
InlineTitles = true; InlineAbovetitles = { InlineTitles }; InlineBelowtitles = { InlineTitles }; InlineOvertitles = false;
InlineTitlesMaxNumberContours = 3; InlineTitlesBlackWidth = 1; InlineTitlesWhiteWidth = { InlineTitlesBlackWidth };
InlineAboveBelowOverMaxNumberContours = 5; InlineAbovetitlesBlackWidth = 1; InlineAbovetitlesWhiteWidth = 1;
InlineBelowtitlesBlackWidth = 1; InlineBelowtitlesWhiteWidth = 1
5 glasses: BestPackingType is RectangularDislocation with 3 rows and 2 columns
SheetNum = 0: Radius = 133.978. Of non-margin area 67.2159% within circles = 74.1161% of infinite-plane exact-hexagonal maximum
Radii = [ 133.978 ]
GlassesOnSheets = [ [ 0 1 2 3 4 ] ]
GlassesOnTastingNotePages = GlassesOnSheets
Titles ASCIIified and re-arranged by GlassesOnSheets = [ [ (A) (B) (C) (D) (E) ] ]
CircletextMaxFontSizes = [ 13.3978 ]
CircletextMaxFontSizes/Radii = [ 0.1 ]
RadiiCirclearrayBaseline = [ 133.781 ]
RadiiCirclearrayInside = [ 124.714 ]
TitleFontSizes = 258.133, all of them
0 = ThisPageOrdering; A4 = ThisPaperType.
URL # tags: Glasses_0 ... Glasses_3; TastingNotes_0 ... TastingNotes_3; VoteRecorder_0, VoteRecorder_1; DecantingNotes_0;
DistillationLog
Only log output remaining:
PageCount = 36; CurFontCache = 30758; CurFormCache = 1; CurOutlineCache = 0; CurUPathCache = 0; usertime = 145529
13 = countexecstack: can be 11 or 13 or 42 or other
3 = countdictstack: this should be 3
0 = CountGraphicsStack: this really should be 0
0 = count: this really should be 0
```