

Times		Eye	Nose	Mouth	Score
A	A	A	A	A	A

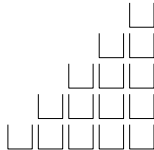
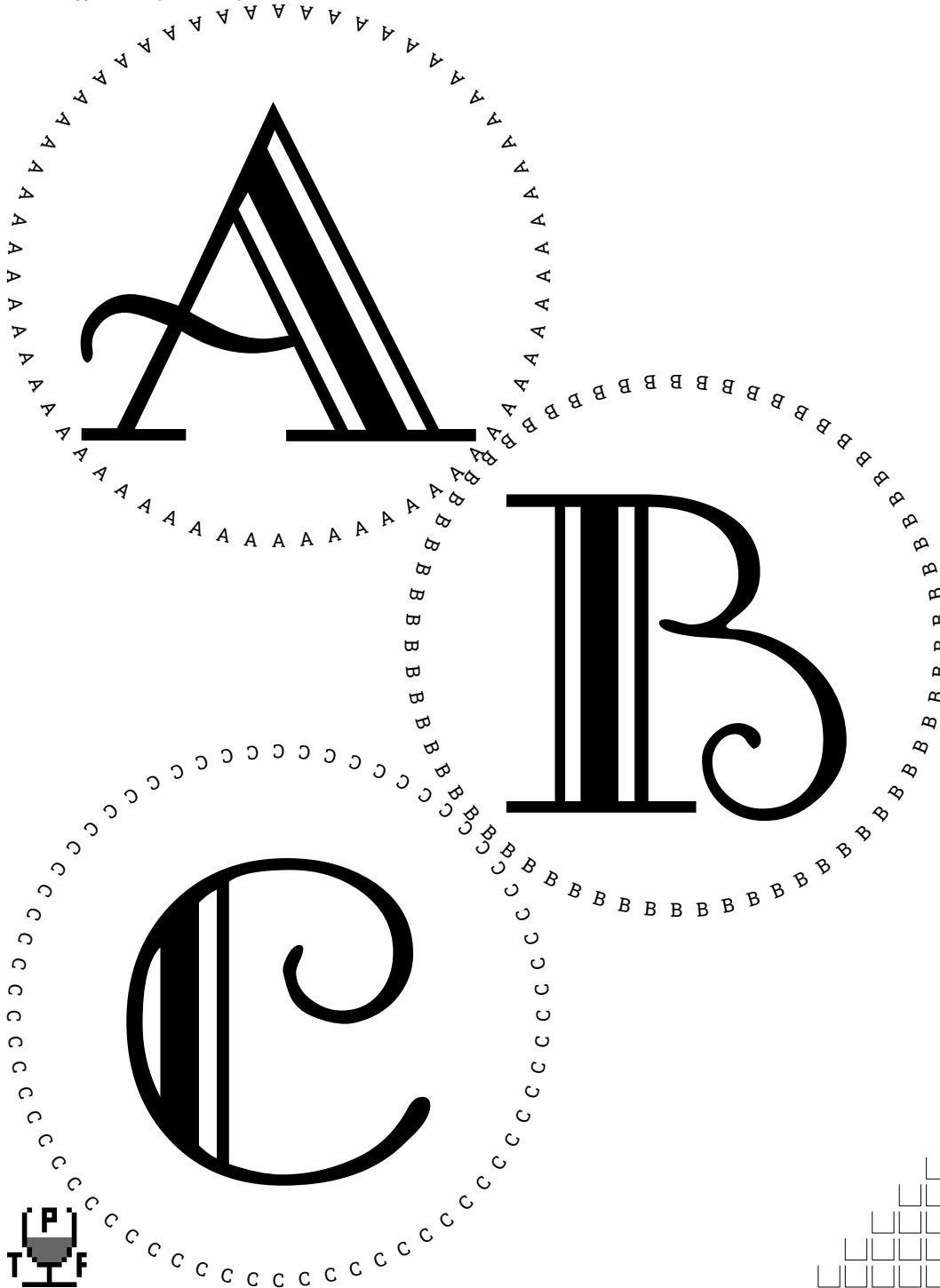
The image features three large, stylized letters: 'A', 'B', and 'C'. Each letter is surrounded by a circular border composed of smaller, identical letters of the same type (A's for 'A', B's for 'B', and C's for 'C') arranged in a circular path. The 'A' has a decorative flourish on its left side. The 'B' has a vertical bar with a gap in the middle. The 'C' has a vertical bar on its left side. In the bottom left corner, there is a small logo consisting of a stylized 'P' and 'F' inside a square, with 'T' and 'F' below it. In the bottom center, there is a small graphic of a grid of squares, resembling a staircase or a partial grid.

A					

B					

C					

Times | Eye | Nose | Mouth | Score



Handwriting practice grid with vertical lines and horizontal dotted lines.

What is it?

Julian

George

Monkey

Total

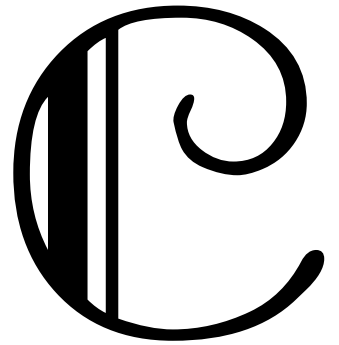
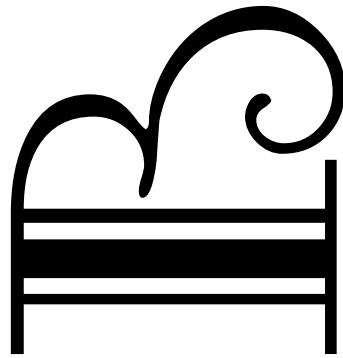
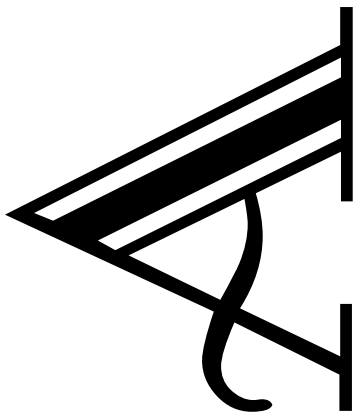
A

B

C

TOTAL

What is it?	Julian	George	Monkey	Total
A				
B				
C				
TOTAL				



<http://github.com/jdawl/placemat/>

<http://github.com/jdawl/placemat/blob/main/PostScript/placemat.ps>

:-) :-) Happily, execution successfully completed. :-) :-)

© Copyright 2022 Julian D. A. Wiseman of www.jdawiseman.com
This work is licensed under a Creative Commons Attribution-ShareAlike 4.0 International Licence.
<http://creativecommons.org/licenses/by-sa/4.0/deed.en>

product = Acrobat Distiller 11.0; languagelevel = 3; version = 3018.101; revision = 0
Software version = SoftwareVersionDateTimeAdobeFormat = D:202212302330 = 23:30 Fri 30 Dec 2022
These placemats ~ ParametersVersionDateTimeAdobeFormat = D:202301021320 = 13:20 Mon 02 Jan 2023
Used paper types: A4 = 210mm*297mm.

External links for document outline:
Thread on ThePortForum.com = <http://www.theportforum.com/viewtopic.php?t=00175&view=unread#unread>
Latest version this placemat = <http://www.jdawiseman.com/2023/20230103.pdf>
in list of placemats = http://www.jdawiseman.com/papers/placemat/placemats_list.html#a20230103
Boot & Flogger = <http://www.davy.co.uk/wine-bar/boot-and-flogger/>
...OpenStreetMap = <http://www.openstreetmap.org/node/534961998>
...google.co.uk = <http://goo.gl/maps/7NEiwAMEZpG2>
...What3Words: cafe.humid.palace = <http://map.what3words.com/cafe.humid.palace>
...StreetMap.co.uk = <http://www.streetmap.co.uk/map.srf?x=532409&y=180083&z=106&pc=SE1+1TA>
...bing.com = <http://www.bing.com/maps/default.aspx?where1=SE1+1TA&cp=51.50428--0.0935>
GitHub = <http://github.com/jdawl/placemat/#readme>
PostScript = <http://github.com/jdawl/placemat/blob/main/PostScript/placemat.ps>
Documentation start = http://github.com/jdawl/placemat/blob/main/Documentation/introduction_first_placemat.md#readme
Placemats, list = http://www.jdawiseman.com/papers/placemat/placemats_list.html
Author = <http://www.jdawiseman.com/author.html>

Fonts: /GalleryNormal (TitlesFont); /RobotoSlab-Regular (CircleTextFont, NamesFont, HeaderFont); and perhaps others.

Array equalities: {Circlearrays = CirclearraysTastingNotes = CirclearraysVoteRecorder = Titles = TitlesTastingNotes = TitlesVoteRecorder}; {Names = NamesTastingNotes = NamesVoteRecorder}.

SheetNum=0, with 3 glasses: best BaseStyle, with radius 114.576, is /Diamonds with 3 rows and 2 columns; max. capacity of this arrangement being 3. Of non-margin area 57.5845% within circles = 63.496% of infinite-plane exact-hexagonal maximum.
Warning! Radius=114.6pt=40.4mm=1.59" is a tight fit for the 36mm=102pt radius of the foot of an IVDP glass.

Radii = [114.576] => diameters ~ 80.8mm=3.18", all of them.

GlassesOnSheets = [[0 1 2]]
Titles, ASCIIified and re-arranged by GlassesOnSheets = [[(A) (B) (C)]]
GlassesOnTastingNotePages = GlassesOnSheets

CirclearraysFontSizes = 8, all of them. CirclearraysFontSizes/Radii = 0.069823, all of them.
CirclearraysUnroundedN = [[60.1838 64.6411 65.3754]]
CirclearraysN = [[60 64 64]]

RadiiCirclearrayBaseline = [114.492]. RadiiCirclearrayInside = [108.724].

Binding constraints on TitleFontSizes as SheetNum,WithinPage,WithinTitles,Title: 0,0,0,[(A)] .

TitleFontSizes = 166.469, all of them.
TitleMaxHeightProportionInnerRadius directly relevant for these WithinTitles and Titles: 2 = C.
Title heights / RadiiCirclearrayInsideUsableTAB = [[1.31829 1.26777 1.2693]]

URL # tags: TastingNotes_0 ... TastingNotes_2; VoteRecorder_0, VoteRecorder_1; DecanterLabels_0; DistillationLog.

Execution time ~ 1.616 seconds, excluding time for parameter assignments and log page(s).

2 = vmstatus pop pop: should = 1|2 and does :-)
0 = CountClipStack: should = 0 and is :-)
0 = CountGraphicsStack: should = 0 and is :-)
3 = countdictstack: should = 3 and is :-)
0 = count: should = 0 and is :-)